

# How to migrate your personal XULU from [www.wikisquare.de](http://www.wikisquare.de) to [wald.intevation.org](http://wald.intevation.org)

## 1. General

Besides this short introduction, how to migrate your XULU SVN, you also can visit ...

<http://wald.intevation.org/projects/xulu/>

... to find out more about the possibilities of the new WALD [1] platform, which also includes a Tracker to communicate bugs or feature requests.

## 2. Optional: Commit your latest changes

I will transmit the SVN to the new location (WALD) at Sunday afternoon. So if you have made changes on XULU- or SCHMITZM-Classes, which are not yet committed, please commit these changes to the **old** Wikisquare-SVN [2]

**until Sunday, March 1st 2009 (11:59am).**

Every commit on the old SVN after that deadline will be lost!!

Note: It is **not necessary** to commit changes on configuration files in the "plugin" directory (e.g. your own color maps in "gtcolormaps.xif") or "registry" files. Section 4 shows how to transfer these personal configurations to the new SVN.

### 3. Check out new SVN for XULU

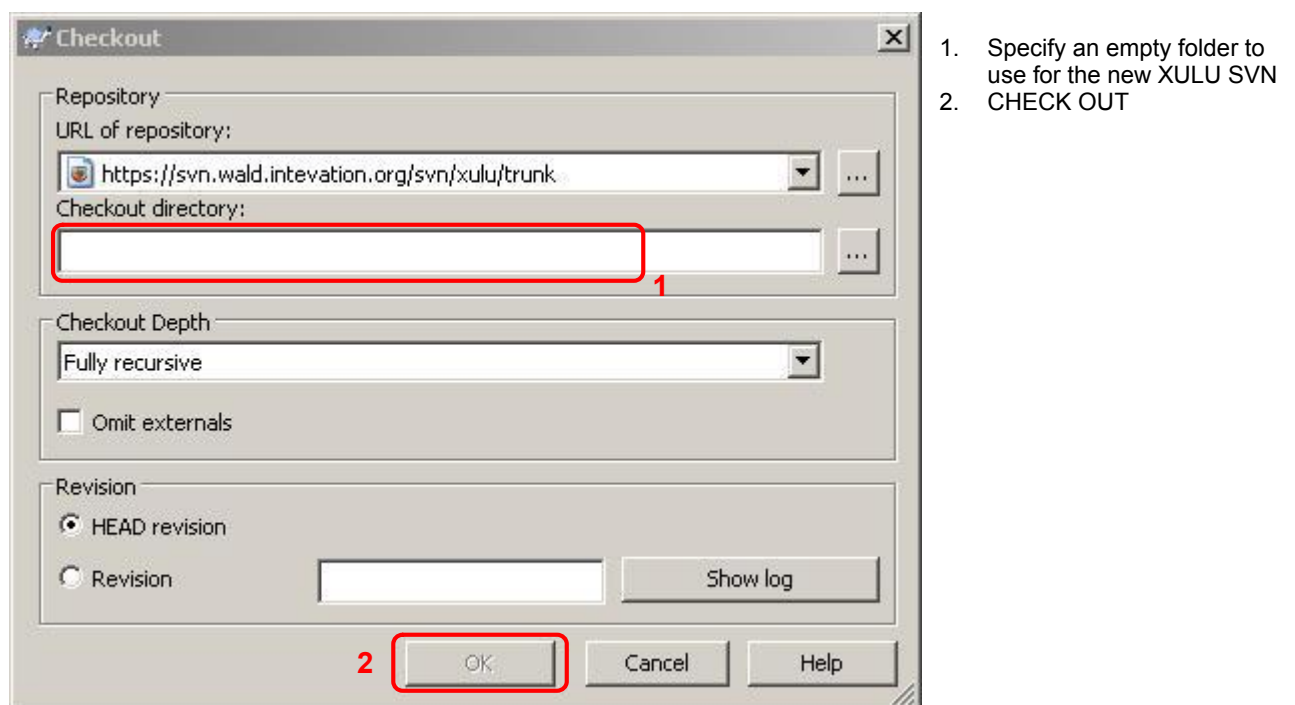
To checkout SVN from WALD please do not use the folder, you previously used for the Wikisquare-SVN!! Instead **create a new folder** (outside of the old SVN structure!) to checkout from WALD!

#### Variant (a): Read-only-User

If you only want to use XULU for your own, without writing your changes (e.g. on Java-Classes) back to SVN, you can use the anonymous checkout:

```
svn checkout https://svn.wald.intevation.org/svn/xulu/trunk
```

The following figure shows, how to checkout with Tortoise [3] (right click on folder in Windows Explorer → *SVN checkout*):



After the checkout procedure follow the steps in section 4.

#### Variant (b): Developer

If you want to communicate with other XULU members and commit your modifications to the SVN ...

- ... you have to become a member of the WALD-Community
- ... join the XULU project
- ... you have to use SVN via SSH

To become a member of the WALD-Platform, follow this Link:

<http://wald.intevation.org/account/register.php>

After your registration is confirmed, you can join the XULU project (following the Link in section 1):

ever-growing free software

Home Persönliche Seite Projektbaum Quellcodestücke Projekthilfe gesucht The XULU Modelling Platform

Überblick Tracker Neuigkeiten SCM Files

XULU is a stand-alone Java software which provides functionalities needed for (simulation) modelling - e.g. data types, import/export, visualisation, GUI - in a generic (non-model-specific) way, so there is a high grade of reusability for many models.

This project has not yet categorized itself in the Trove Software Map.

Registriert: 2009-02-24 13:28

**Entwicklerinformationen**

Projektbetreuer:  
Martin Schmitz

Developers:  
Hans Plum  
Stefan Krüger

[Zeige Mitglieder]

[Request to join]

I will confirm your request as fast as I can. Nevertheless you can continue with the following steps before your join request is confirmed!

Next you have to lodge your public SSH key in your WALD profile, so you do not have to enter your password on every SVN access. After login at WALD, follow *My Page* → *Account Maintenance* → *Edit Key*<sup>1</sup>:

To generate a public key, run the program 'ssh-keygen' (you can use both protocol 1 or 2). The public key will be placed at '~/.ssh/identity.pub' (protocol 1) and '~/.ssh/id\_dsa.pub' or '~/.ssh/id\_rsa.pub' (protocol 2). Read the ssh documentation for further information on sharing keys.

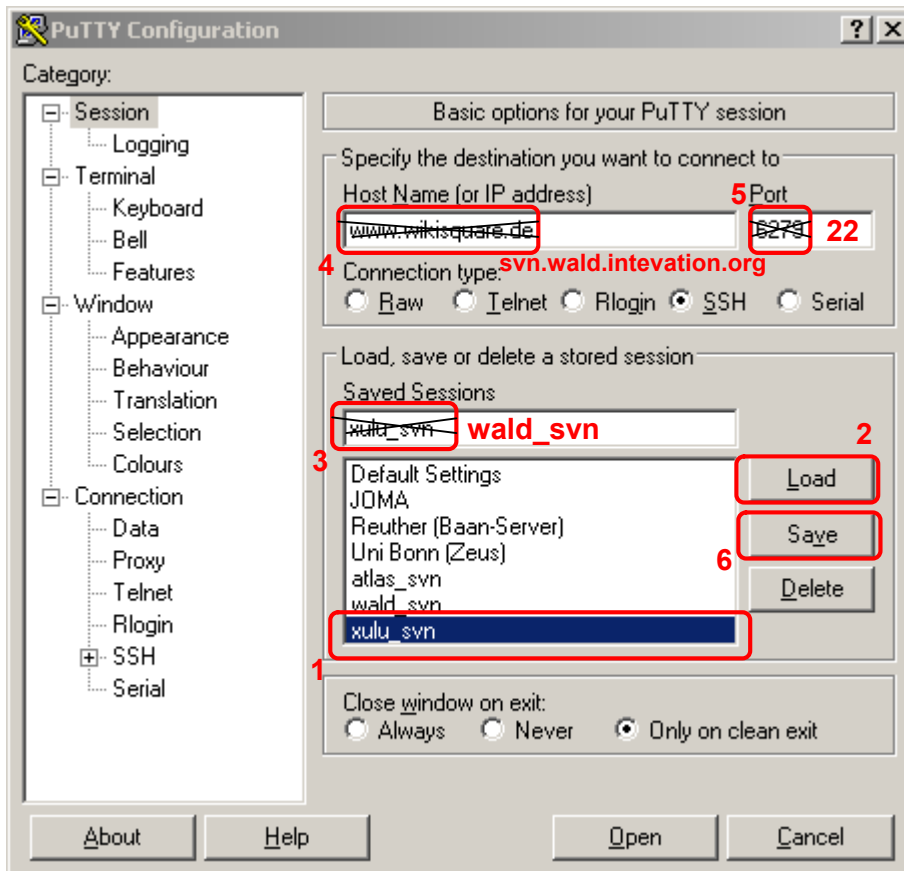
Authorized keys:  
*Important: Make sure there are no line breaks except between keys. After submitting, verify that the number of keys in your file is what you expected.*

```
ssh-rsa
AAAAB3NzaC1yc2EAAAABJQAAAIBbp/XgcfheX24v1CZyvRPO/zaJ4ZkzxWyoD1Tdsr
rsa-key-20080731
```

Update

I generated a new pair of private and public key, but I think it is also possible to use the same as for your Wikisquare-Account, so you can modify your PuTTY [4] configuration as follows:

<sup>1</sup> in section *Shell Account Information* on the bottom of the page

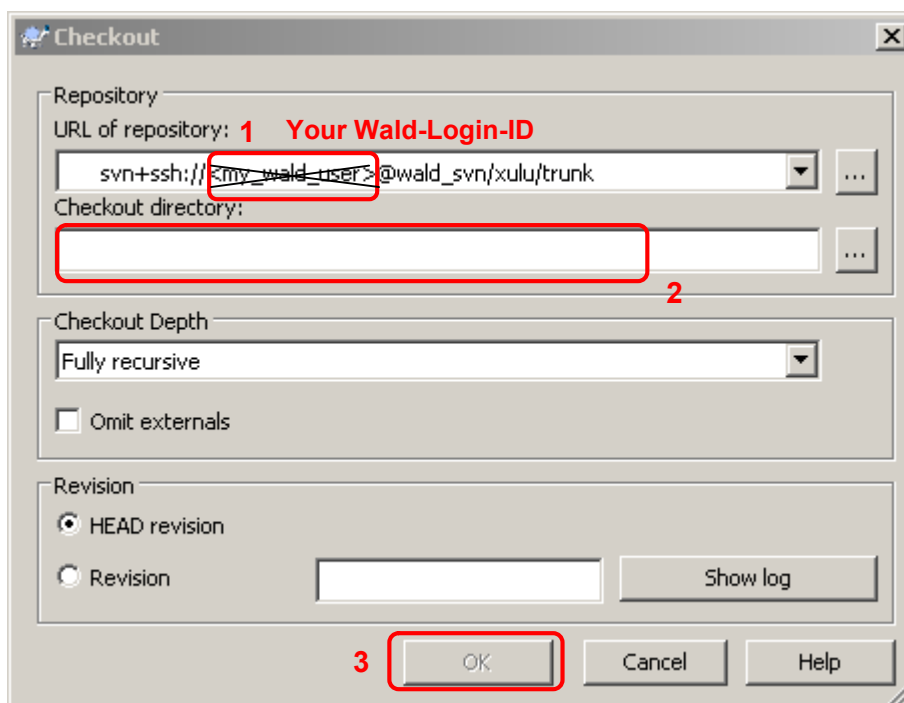


1. Choose your old profile used for Wikisquare
2. Press LOAD
3. Replace the session name by a new one used for Wald, e.g. „wald\_svn“
4. Replace the Wikisquare-URL by „svn.wald.intevation.org“
5. Replace the port by 22
6. Save the new profile

If meanwhile I confirm your XULU membership, you can now perform your first SVN checkout (remember: use a new folder!!):

```
svn checkout svn+ssh://<my_wald_user>@svn.wald.intevation.org/xulu/trunk
```

The following figure shows, how to checkout with Tortoise<sup>2</sup> (right click on folder in Windows Explorer → *SVN checkout*):



1. Replace <my\_wald\_user> by your Wald-Login-ID
2. Specify an empty folder to use for the new XULU SVN
3. CHECK OUT

<sup>2</sup> in combination with PuTTY

## 4. (Re-)Configure XULU after the first checkout

### Variant (a): Simply use the defaults

If you are a completely new XULU user or you do not want/need to migrate your old configurations, you simply call

```
initXulu.bat (on Windows Systems)
or initXulu.sh (on Linux systems3)
```

This will copy all default configuration files from the "defaults" folder to their expected location in the folder structure. See the `readme.txt` for more information. After that, you can immediately start XULU with

```
startXulu.bat (on Windows Systems)
or startXulu.sh (on Linux systems4)
```

### Variant (b): Migrate configurations from your old XULU SVN

If you want to migrate some configurations from your old XULU to the new SVN folder structure do not yet call the init script. First simply ...

- copy the `plugin` folder (or a part of it) to the new XULU location
- and/or copy the `XuluProperties` to the new XULU location
- and/or copy your XULU registry files to the new XULU location

**Note:** Because of some changes in the library structure it is not recommended to use your old `startXulu.bat/sh`. It will not work! Instead (after the initialization procedure; see below), re-customize the new start script with your personal changes. The same is recommended for a possible Eclipse configuration (`.project` and `.classpath`).

**After** copying your preferred configurations to the new SVN folder, you have to proceed the XULU initialization as mentioned in Variant (a):. This guarantees that other (or new) configuration files are also placed in the expected locations. Existing files are not overwritten.

In the unexpected case of trouble with your old configurations, you can call the initialization script again with the parameter `/init` (Linux: `--init`). This will overwrite every existing configuration files with the defaults, so XULU should be work. See the `readme.txt` for more information.

---

<sup>3</sup> on Linux: first call `"chmod +x initXulu.sh"` to make the file executable!!

<sup>4</sup> on Linux: first call `"chmod +x startXulu.sh"` to make the file executable!!

## 5. Optional: Check out new SVN for SCHMITZM

To also check out the SCHMITZM Java library, which formerly was a part of XULU, you can join the new SCHMITZM project under ...

<http://wald.intevation.org/projects/schmitzm/>

The join and checkout procedure is the same as for XULU (see Section 3).

You can join SCHMITZM with the same WALD account, use the same pair of SSH keys, and use the same Putty configuration as for XULU.

The only difference is, that the SVN URLs end with `.../schmitzm/trunk` (instead of `.../xulu/tunk`). Furthermore there is no initialization procedure, because SCHMITZM is only a Java library, not an application.

---

[1] <http://wald.intevation.org/> is a distribution of Intevation GmbH (<http://www.intevation.de/>)

[2] <http://www.wikisquare.de/> is a distribution of Stefan A. Krüger

[3] Tortoise SVN Software: <http://tortoisesvn.tigris.org/>

[4] PuTTY SSH and telnet client: <http://www.putty.org/>